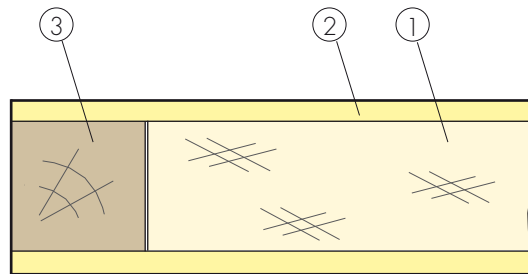


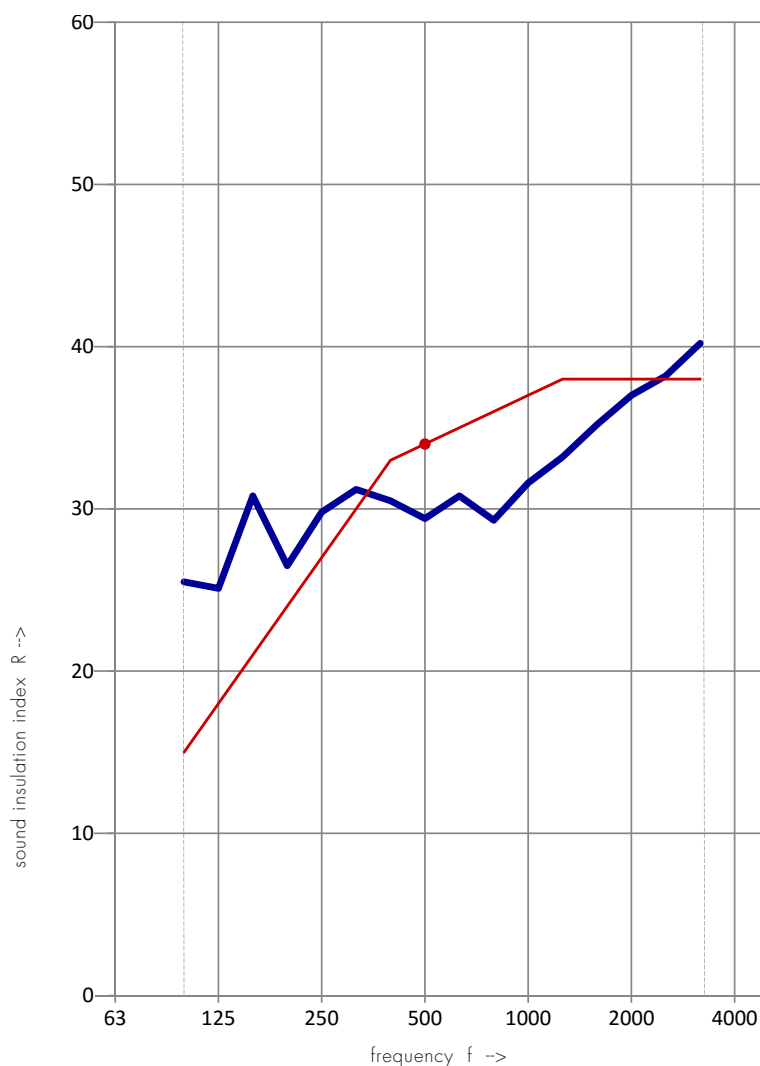
Construction of the test specimen:

- Door leaf 1000 x 2000 x 54 mm, sealed
- 1 : Solid particle board 42 VL
  - 2 : Hardboard 6 mm
  - 3 : Softwood 40 mm



Test opening: 2,00 m<sup>2</sup>  
Weight of test specimen: 30,0 kg/m<sup>2</sup>  
Temperature [°C]: 18  
Humidity [%]: 56  
Source room volumes: 72 m<sup>3</sup>  
Receiver room volumes: 70 m<sup>3</sup>

frequency [Hz]	R [dB]
50	-,-
63	-,-
80	-,-
100	25,5
125	25,1
160	30,8
200	26,5
250	29,8
315	31,2
400	30,5
500	29,4
630	30,8
800	29,3
1000	31,6
1250	33,2
1600	35,2
2000	37,0
2500	38,2
3150	40,2
4000	42,0
5000	43,3



Airborne sound  
insulation  $R_{WV} (C, C_{tr}) = 34,0 (-1, 1; -2,7)$  dB  
C50\_3150: -    C50\_5000: -    C100\_5000: -0,2  
Ctr50\_3150: -    Ctr50\_5000: -    Ctr100\_5000: -2,8